

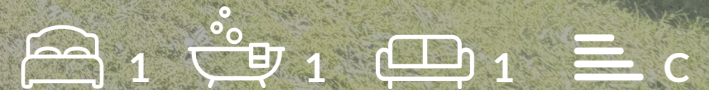


OAKFIELD



Snowdon Close, Eastbourne, BN23 8HW

Price Guide £190,000



## Snowdon Close, Eastbourne, BN23 8HW

PRICE GUIDE: £190,000 - £200,000

Located in the Pennine Estate development in Eastbourne, this well-presented mid-terrace one bedroom house offers modern living in a peaceful residential setting. Perfect for first-time buyers, downsizers, or investors, the property has been refurbished throughout and is ready to move straight into.

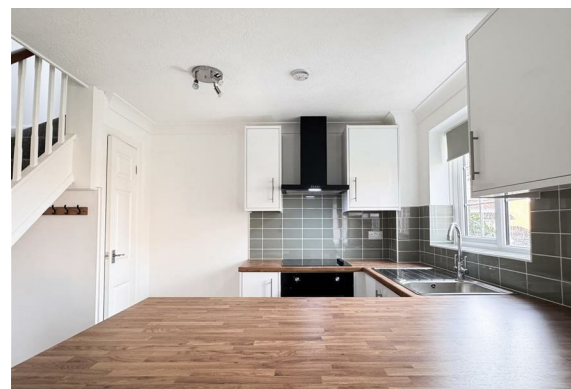
The accommodation features a bright and spacious living area, beautifully complemented by new flooring and fresh décor. The new stylish fitted kitchen provides ample worktop with breakfast bar and storage space.

Upstairs, the property offers a well-proportioned double bedroom and a new contemporary bathroom complete with shower over bath.

A newly installed combi gas boiler supplies efficient gas central heating, and the home further benefits from double glazing throughout.

Externally, the property enjoys a neatly presented front garden, and an allocated parking space is included for added convenience.

Situated in a well-regarded residential area, the home offers easy access to local amenities, transport links, and scenic walks. With no onward chain, this property presents an excellent opportunity for a smooth and swift purchase.





### Living Room

11'11" x 11'3" (3.64m x 3.44m)

### Kitchen

12'3" x 6'9" (3.73m x 2.06m)

### Bedroom

11'11" x 11'11" (3.64m x 3.64m)

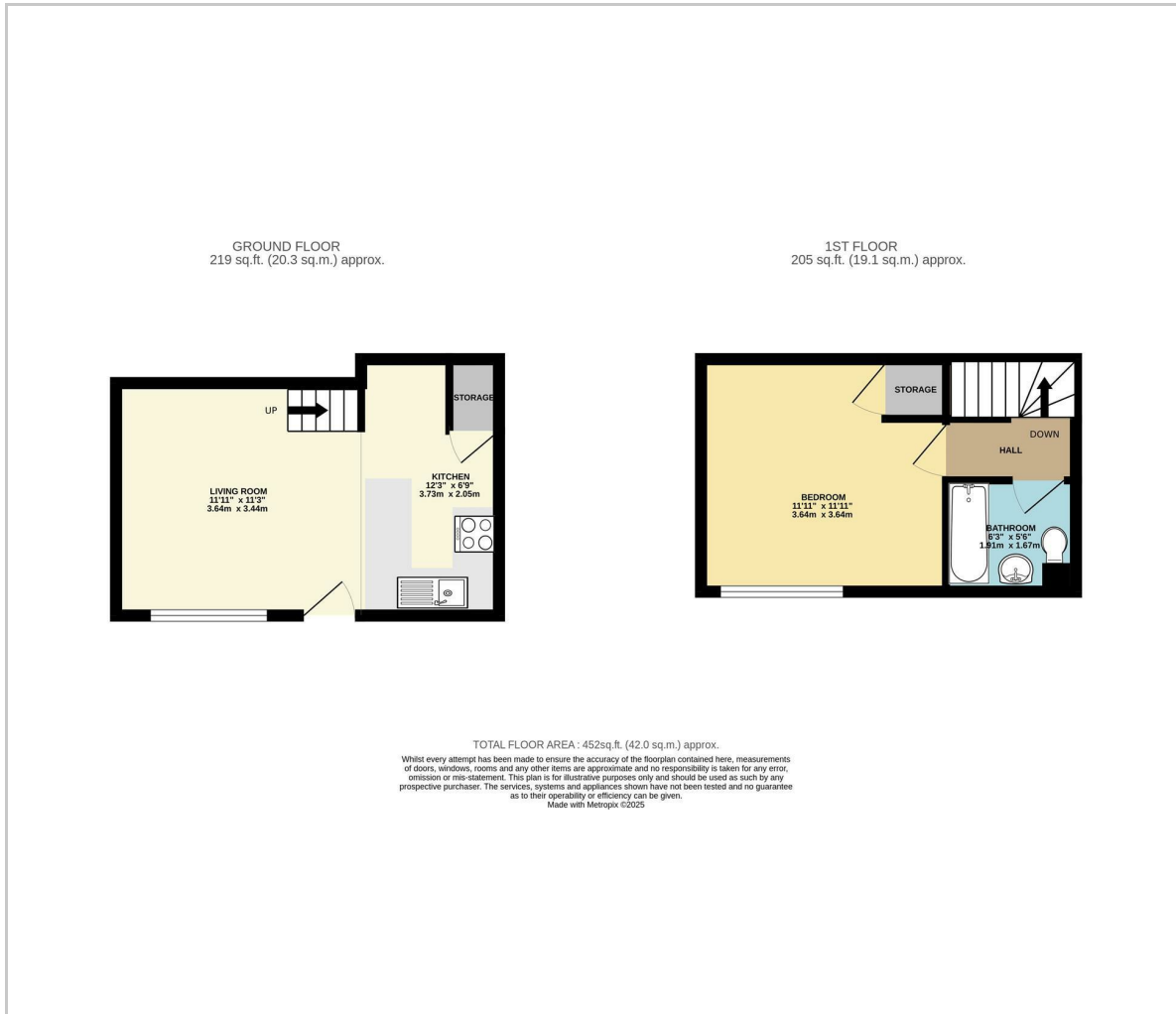
### Bathroom

6'3" x 5'6" (1.91m x 1.68m)

**Council Tax Band B - £1,969.72 Per Annum**



## Floor Plan

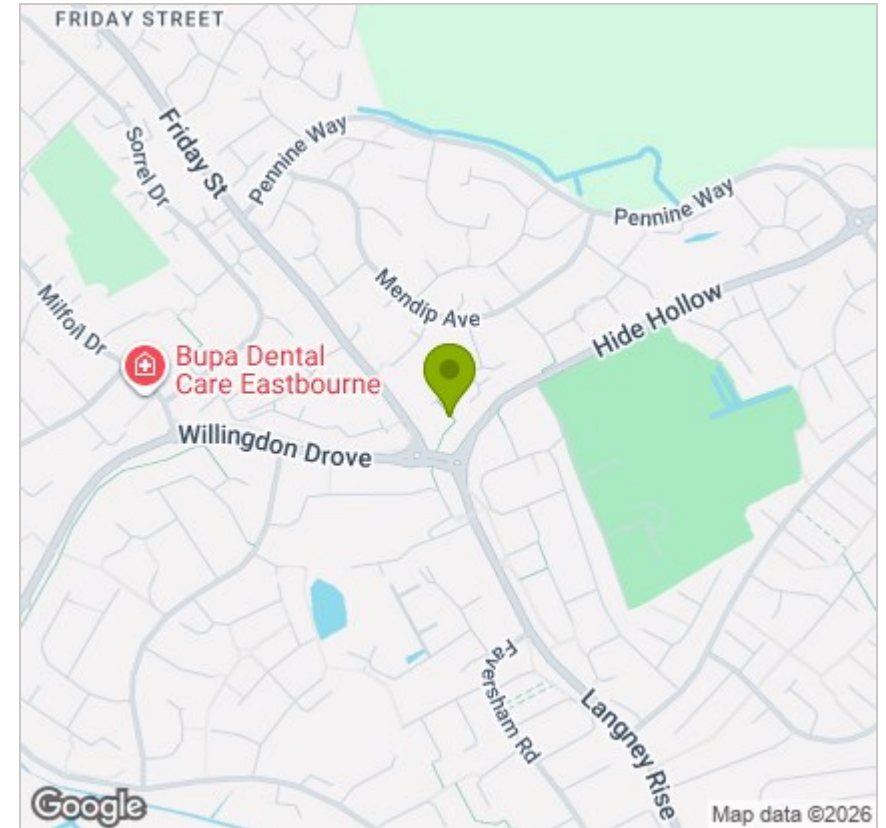


## Viewing

Please contact us on 01323 723 500 if you wish to arrange a viewing appointment for this property or require further information.

These particulars, whilst believed to be accurate are set out as a general outline only for guidance and do not constitute any part of an offer or contract. Intending purchasers should not rely on them as statements of representation of fact, but must satisfy themselves by inspection or otherwise as to their accuracy. No person in this firm's employment has the authority to make or give any representation or warranty in respect of the property.

## Area Map



## Energy Efficiency Graph

